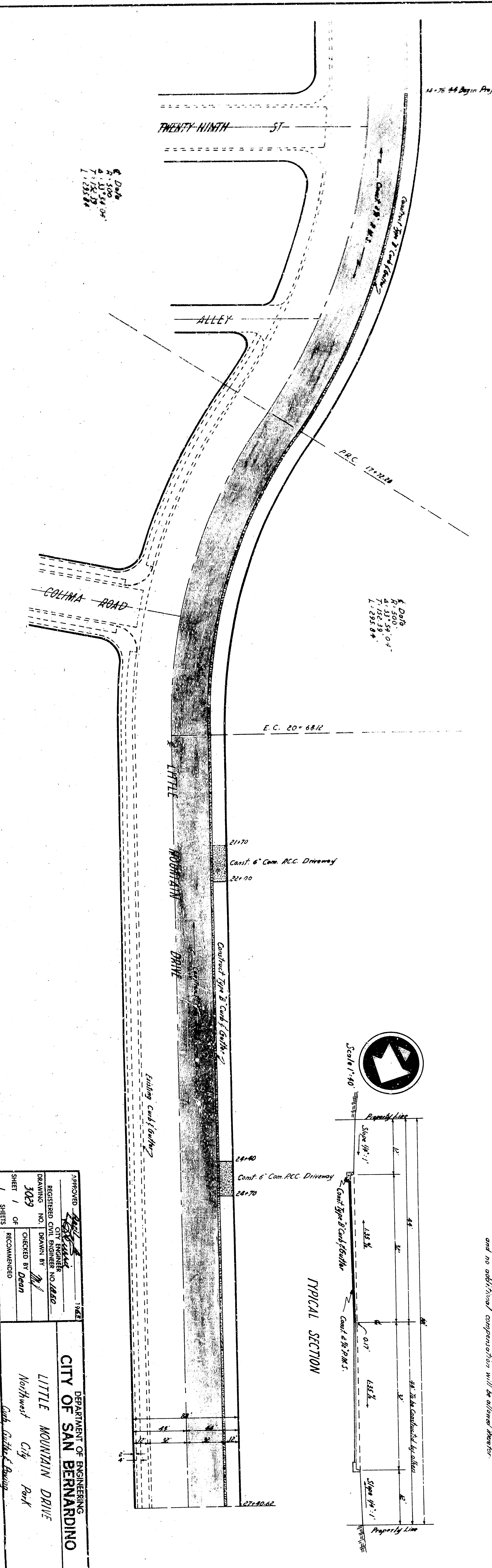
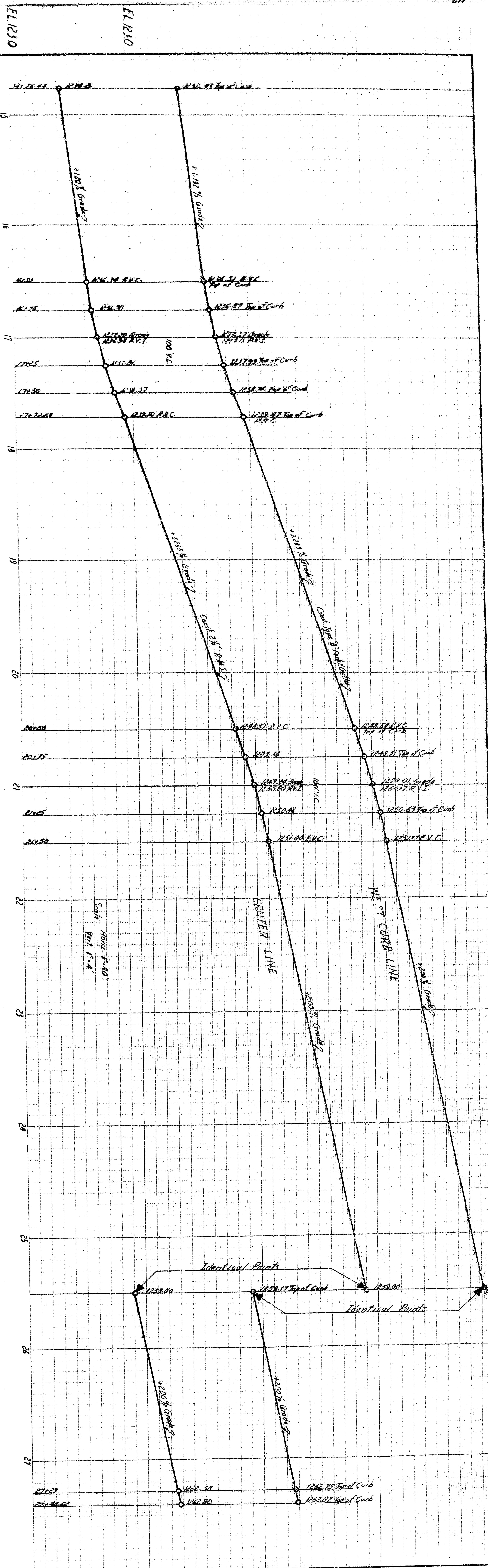


GENERAL NOTES

- All work indicated on these plans shall be done in conformity with applicable provisions of Standard Specifications for 231 and Standard Drawings No. 231 on file in the Office of the City Engineer.
- Payment for all materials, earthwork and working shall be included in prices paid for work, unless otherwise specified and no additional compensation will be allowed therefor.

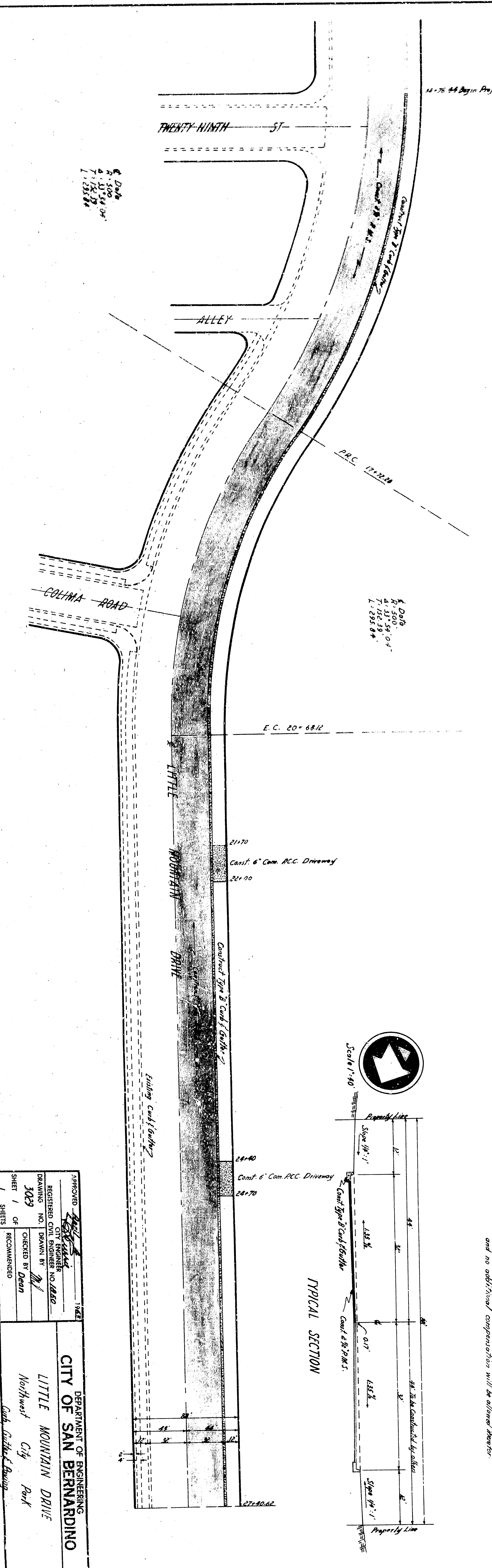


APPROVED	1962	DEPARTMENT OF ENGINEERING
REGISTERED CIVIL ENGINEER NO. 18260		CITY OF SAN BERNARDINO
DRAWINGS NO. 3029		LITTLE MOUNTAIN DRIVE
DRAWN BY		Northwest City Park
CHECKED BY Dean		Curb, Gutter & Paving
RECOMMENDED		
SHEET 1 OF 1 SHEETS		



GENERAL NOTES

- All work indicated on these plans shall be done in conformity with applicable provisions of Standard Specifications for 231 and Standard Drawings for 231 on file in the Office of the City Engineer.
- Payment for all materials, earthwork and working shall be included in price paid for work, unless otherwise specified and no additional compensation will be allowed therefor.



APPROVED	1962
REGISTERED CIVIL ENGINEER NO. 18260	
DRAWINGS	
DRAWN BY	
CHECKED BY	Dean
RECOMMENDED	
SHEET 1 OF 1 SHEETS	
CITY OF SAN BERNARDINO	
DEPARTMENT OF ENGINEERING	
LITTLE MOUNTAIN DRIVE	
Northwest City Park	
Curb, Gutter & Pavement	